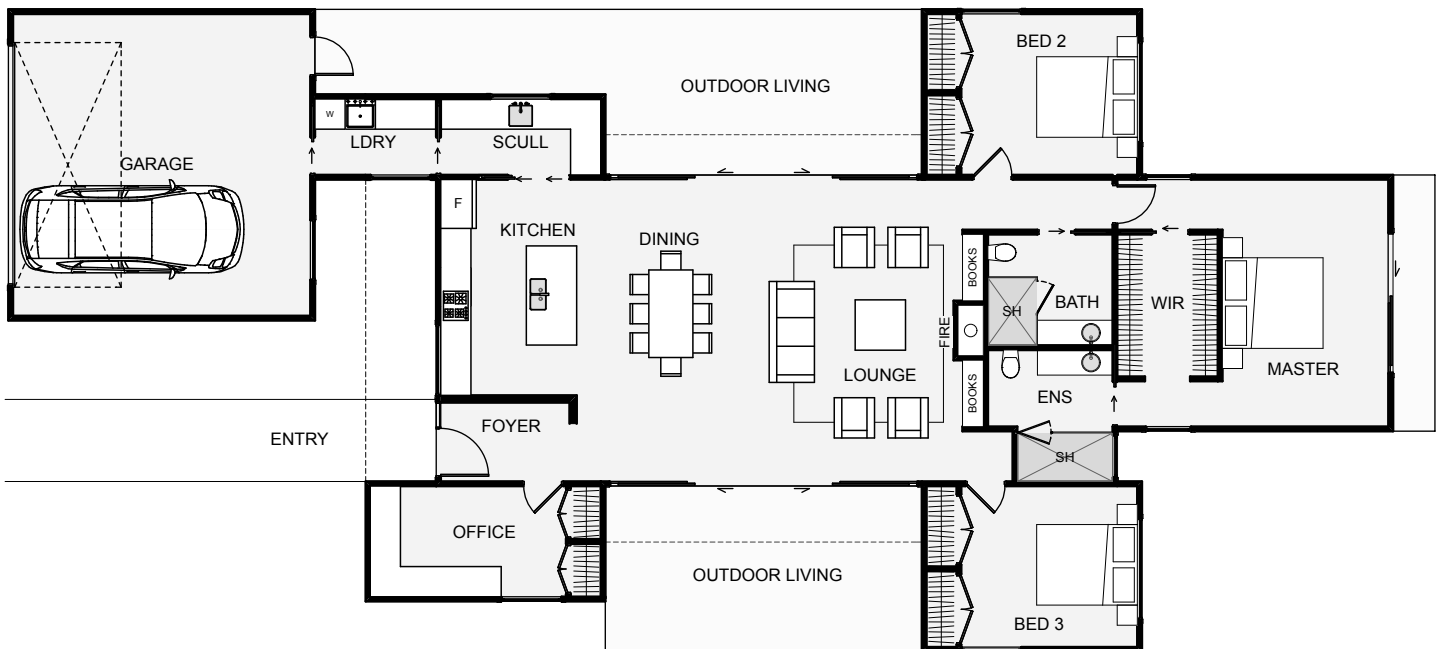




COASTALHOMES
Building You A Lifestyle

This home is semi symmetrical in shape, looks great with its length and includes very separate bedrooms. All bathroom plumbing is condensed in one location which keeps the pipework simple. The scullery is cleverly located as you walk in from the garage and through the laundry making grocery shopping a breeze. The living layout is simple yet effective and depending on the day, wind or time, you can pick your outdoor spot of choice which are both sheltered in design. The Bluff is a home with lots to offer.



Floor Area: 198m²

2 3+ 2 27.5m 12.8m

Contact Phil Thompson:

Ph: 027 492 6826

E: phil@coastalhomesnz.com

www.coastalhomesnz.com



COASTALHOMESTM
Building You A Lifestyle