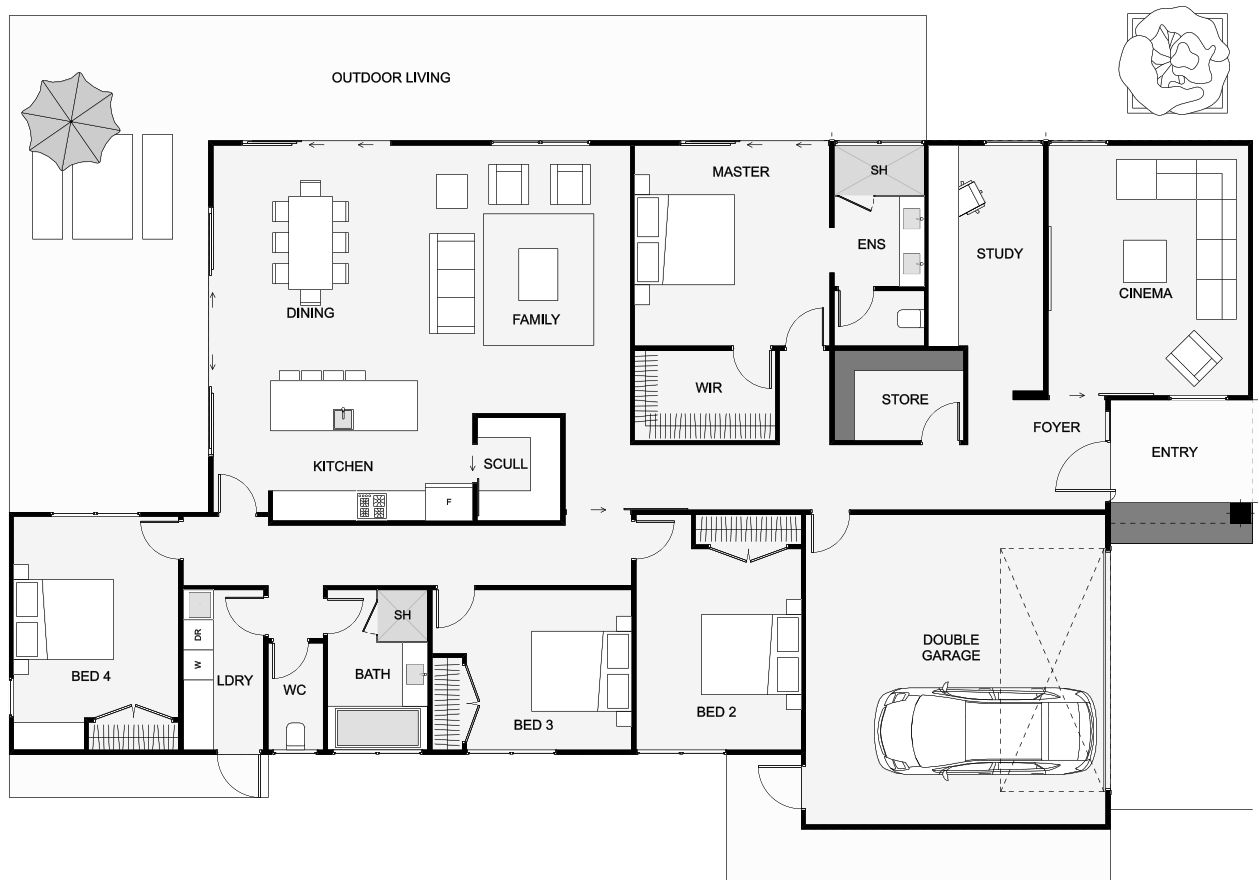




The Mercury has some modern street appeal in its dark cladding and twin gable design. This home has two living spaces, each at opposite ends of the house, always handy! Also included is a large study, close to the entry, so great if you work from home. This home also includes a large laundry, a scullery and a living space which flows out to the outdoor living. This home really does work as good as it looks!



Floor Area: 265m²

2
 4+
 2
 2
 24.9m 13.8m

Contact Phil Thompson:

Ph: 027 492 6826

E: phil@coastalhomesnz.com

www.coastalhomesnz.com