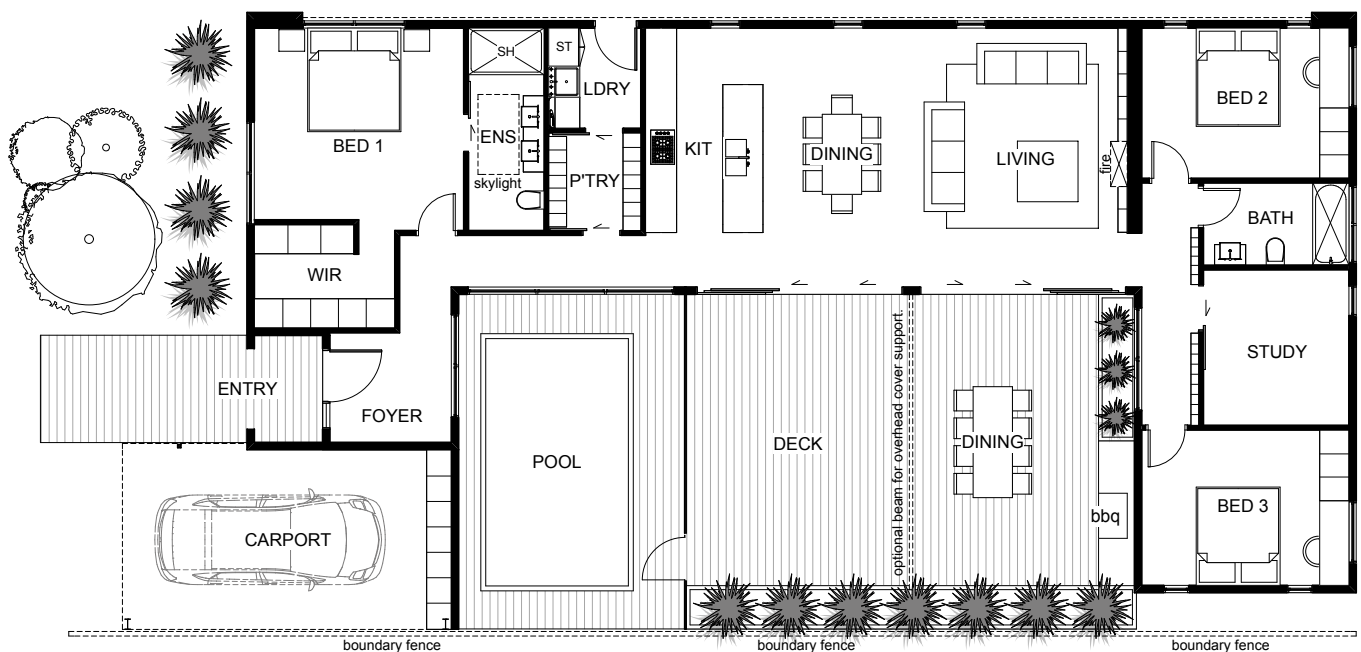




The Petrel is a home that welcomes everyone. The indoor and outdoor living spaces are centrally located in the home and create a spacious integrated hub for just the family to relax or for family and friends to join together. The master bedroom is at the front of the home, offering the ultimate privacy. The other bedrooms conveniently surround the main bathroom and are off a hallway on the opposite side of the living area. The Petrel offers relaxing and stylish living at any budget.



**Floor Area: 148m<sup>2</sup>**



1



3+



2



1

23.7m

11.7m

Contact Phil Thompson:

Ph: 027 492 6826

E: [phil@coastalhomesnz.com](mailto:phil@coastalhomesnz.com)

[www.coastalhomesnz.com](http://www.coastalhomesnz.com)



**COASTALHOMES™**  
Building You A Lifestyle